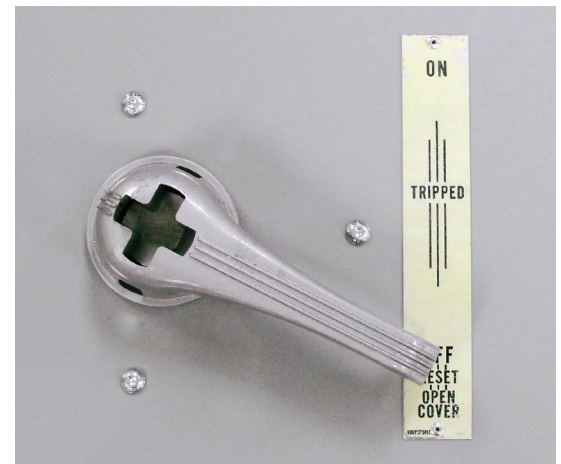


DESCRIPTION

The **CBS ArcSafe® RSA-35** remote switch actuator (RSA) is designed to operate the Westinghouse 11-300 MCC bucket without having to make any modifications to existing electrical equipment thanks to CBS ArcSafe's magnetic latching system. The lightweight, portable RSA-35 allows technicians to remotely close or trip the motor control center bucket from a safe distance of up to 300 feet while remaining stationed outside the arc-flash boundary. Typical applications include switching and protection of squirrel-cage, wound-rotor, and synchronous motors. Designed, manufactured, and assembled in the USA, all RSA units are portable, fast, and easy to set up, offer mechanical and/or electrical safety protection, are adjustable to fit unique electrical equipment configurations, reduce the requirements for personal protection equipment (PPE), and help customers with NFPA 70E arc-flash safety compliance. Optional features include radio remote with range up to 300 feet, 24 V DC LED light, wireless video camera system with LCD monitor, and rugged protective case assembly.

SPECIFICATIONS

WEIGHT:	12 lbs
DIMENSIONS:	6.5" L X 5.5 W X 11" H
POWER CONSUMPTION:	30 W
OPERATING DISTANCE:	25-300 feet
COMPATIBILITY:	Size 1-4 only; Eaton/Cutler-Hammer MCCB slide plate type handle mechanism (314C386G02, 314C386G03, 314C386G05, 314C386G06, 314C386G09, 314C386G10)
CONTROL/POWER SOURCE:	CBS ArcSafe® RSO-I control console



OVERVIEW

- Remote operation from up to 300 feet
- Lightweight, portable, and adjustable
- Simple setup; no equipment modification required
- Reduces or eliminates need for arc-flash hazard suits
- Designed, manufactured, and assembled in the USA

